

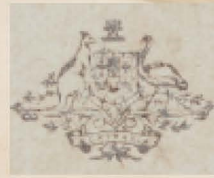


**Kucom 1947-2022** celebrating  
75 years of continuous  
operation as a community theatre in Mackay

**WHAT'S  
NEXT?**

**KUCOM  
COMMITTEE  
2022**

**Patron** Mayor Greg Williamson  
**President** Bronwyn Grannall  
**Vice President** Maureen Coleman  
**Secretary** Carolyn Roche  
**Treasurer** Tessa King  
**Committee** Anne Clutterbuck  
 Leticia Harberger  
 Jayne Royal  
**Email:** admin@kucom.org.au  
**Ph:** 0439 684 548  
**Website:** [www.kucom.org.au](http://www.kucom.org.au)  
**Facebook:** <https://www.facebook.com/kucomtheatre>



RG. D.1

NO. V. B 990021

COMMONWEALTH OF AUSTRALIA

# DINKUM ASSORTED

## RATION BOOK

JUNE, 1942. ISSUE

Name .....

Address.....

**Civilian Identity No.**

**Or Alien**

**Registration No.**

--	--	--	--

**Age at 13th June, 1942.....years.....months**

(If not holding Civilian Identity Card or Alien  
Registration Certificate)

**If this Book is found it must be returned at once  
to the DEPUTY DIRECTOR OF RATIONING  
for the State**



# DINKUM ASSORTED

By Arrangement with the Licensor, Linda Aronson  
c/- Curtis Brown (Aust) Pty Ltd  
proudly presents



# DINKUM ASSORTED

**By Linda Aronson**  
**Directed by Luana Royle**



Jane Reddrop



Jaki Pianta



Karen Bonham



Teneale White



Stephanie Jones



Brittany McCarthy



Stephanie Feaver



Ann Soriano



Tessa King



Jennifer Emmett



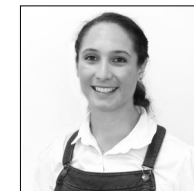
Luana Royle



Katrina Hansen



Nerida Hansen



Nicole Pasquale



Maureen Coleman

# DINKUM ASSORTED

## CAST

JOAN	Jane Reddrop
PEARL	Jaki Pianta
MARGIE	Karen Bonham
ROSIE	Teneale White
LITTLE BEAT	Stephanie Jones
ETHEL	Brittany McCarthy
GLAD	Stephanie Feaver
DORIS	Ann Soriano
FLORRIE	Tessa King
EDIE	Jennifer Emmett
GRACE	Luana Royle
BIG BEAT	Katrina Hansen
VI	Nerida Hansen
MILLIE	Nicole Pasquale
CONNIE	Maureen Coleman

## PRODUCTION CREW

Producer/Director	Luana Royle
Assistant Director	Jayne Royal
Musical Director	Karen Bonham
Choreographer	Cicely Baira
Set Construction	John Irvine with Cast and Crew
Set Design/Props	Luana Royle
Costumes	The Cast
Milliner	Jane Reddrop
Lighting Design	Joe Clutterbuck
Sound/Lighting Operator	Samantha Westcott
PR, Poster & Program	Bronwyn Grannall

## DIRECTOR'S NOTES

### WARTIME...

Coupons, rationing, making party frocks from old parachutes and curtains. Incredible crepe paper costumes, amateur concerts at the local Schools of Arts. People repurposed or worked with what was at hand - before recycling !

Dinkum is an amalgamation of all those stories passed down by those women and men who lived through it. The women worked in place of the men, most had children and families were large. They struggled to support them alone or with the help of relatives or friends, had fellas at war .. or worse. They were feisty and fearful.

They made the joy in their lives and suffered things through. Their names may be variously Aileen, Betty, Irene - names you don't hear anymore.

### THIS IS THEIR STORY.

The future implications of their war work and the impact of their involvement has had a lasting impact on subsequent generations - childcare, working conditions, education and women's rights.

### LEST WE FORGET ..

All those who waited and kept the home fires burning. What a privilege it has been to research and work on this project with such a passionate group of creatives.

*Luana Royle*



*you are hereby appointed*

## A CONTROLLER OF FOOD!

... Yours is an all-important war job now

Australia wants every housewife to use her natural ability as a Food Manager to the utmost.

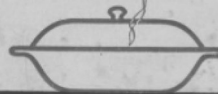
All the food we can possibly spare is needed — for Britain, and for the Pacific offensive too.

Be even more careful in feeding your family. Remember, what you save in the kitchen will definitely help to save the severe rations of the British people being reduced still further. It will help to intensify the attack on Japan. It will help to speed the end of the

### HOW YOU CAN HELP

1. If you have a garden, start a vegetable plot NOW. It pays.
2. Keep a few fowls—they'll supply you with eggs and an occasional chicken to supplement your meat ration.
3. Avoid waste. Cook only enough for one meal. Plan your meals for the best nutrition value.

# Planning MEAT RATION MEALS



# DINKUM ASSORTED

## SYNOPSIS

It's 1942. Japanese submarines have been found in Sydney Harbour. The country awaits an invasion, and in the tiny country town Warrabadanga in Northern NSW, 2000 American airmen have been stationed two miles outside of town.

Fifteen women work in Jamieson's Biscuit Factory. This story is about them, how they cope with life, death, betrayal and how they envisage a possible future.

### ACT ONE

- S1. END OF DAY IN FACTORY DAYROOM AT KNOCK OFF.
- S2. VI'S BACKYARD, NIGHT TIME.
- S3. FACTORY FLOOR, MORNING.
- S4. QUARRY HILL, NIGHT.
- S5. FACTORY DAYROOM, AFTER WORK.
- S6. FACTORY FLOOR, DAY.
- S7. ROAD TO QUARRY HILL, NIGHT.

### ACT TWO

- S1. ROAD TO QUARRY HILL, NIGHT.
- S2. FACTORY DAYROOM, KNOCK OFF.
- S3. FACTORY DAYROOM, AFTER WORK.
- S4. QUARRY HILL, NIGHT.
- S5. FACTORY, NIGHT, AFTER WORK.
- S6. FACTORY DAYROOM, AFTER WORK.
- S7. FACTORY FLOOR, DAY.

### ACT THREE

3 WEEKS LATER ON 25TH NOVEMBER -  
ST PATRICK'S CHURCH HALL. EVENING.  
THANKSGIVING CONCERT

Please note that air raid sirens and loud noises are part of the performance. Cigarettes used in show are specially manufactured props and are not a health hazard. We did not use real aeroplanes or a real goat and no animals were harmed in the making of this product.

## THANKS

In alphabetical order: 3B Creative Theatre, 4CRM Community Radio, Kristyn Everett (for the finale skirts), M2SIGNS, Mackay Entertainment and Convention Centre, Mackay Regional Council, Rainforest Scuba, Taffy's Typing Service, Woolworths



20 MINUTE INTERVAL  
Refreshments available at the  
Factory Canteen in the foyer

