



*In association with Cameron's
Management proudly presents*

It's My Party



*(& I'll Die
If I Want To)*

by Elizabeth Coleman

directed by Jim Kelly

10, 12, 13, 17, 19 & 20 November 2010
starting 8pm

Bookings: MECC 4961 9777
Other enquiries: 0408 980 022



It's My Party (And I'll Die If I Want To)

MESSAGE FROM THE DIRECTOR



What a gruelling year this has been! Directing 3 plays is not good for the health - the first, *Lee*, for Kucom this year, and then 3 months in Airlie Beach directing the female version of Neil Simon's *The Odd Couple* for CABLE Theatre, then immediately into *It's My Party* certainly takes its toll - and I don't like comedy. However, it has been an experience and at the end of the day it has all worked out fine. I have a great cast, some new and some old but with a lot of hard work it has come to life. A big thank you to everyone who has helped and made my life easy throughout this production, and I hope you all as an audience will enjoy the show and tell all your friends to come and see it. And as for next year, please continue to support us as we look for a new home. I want to see you all back wherever we will be performing.

PLEASE NOTE

As it is a requirement in our contract with the copyright agents that the script be performed as it is written, some references to gay people may seem offensive.

Please be advised that it is not Kucom's intention to discriminate in any way against any member of the gay community.

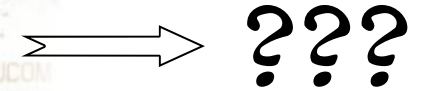
PLAYWRIGHT'S NOTE



ELIZABETH COLEMAN

It's My Party (And I'll Die If I Want To) is about mums, dads, brothers, sisters, emotional blackmail and communication breakdown. It's about being a kid and becoming an adult and wondering why you turned out like you did. It's about sibling rivalry and parental regrets. It's about favouritism and family fights. It's about security, memories, fairy bread and birthday prezzies. It's about mortality and morality, fondness and fury, tension and togetherness. It's about all the conflicting feelings that meld together with one end result for most of us: Blood is thicker than water

What's on at Kucom in 2011?



There are big changes afoot for Kucom next year as we continue our search for a new home, the present Playhouse having just been purchased by Auto Corner.

Thanks to the generosity of the new owners, Kucom productions will continue to be performed in the Playhouse until the end of 2011. After that - who knows?

The 2011 season is still in the pipeline, but keep watching our website www.kucom.org.au for details as they come to hand, including notices of auditions, and of course the Kucom Annual General Meeting which will be held in February.

KUCOM COMMITTEE 2010

President	Sue Stock
Vice President	Jim Kelly
Secretary	Carolyn Thompson
Treasurer	John Atkinson
Committee	Sheryn Dempster Lucy Dobson Bronwyn Grannall Donna Kellion Russell Lowry



Kucom Theatre is proud to be associated as a Business Partner with 4MK-1026AM, Mackay

It's My Party (And I'll Die If I Want To)


SPONSORS

Kucom Theatre gratefully acknowledges the assistance and support of:



Your one stop
SIGN SHOP

Ph. 4951 4633
Fax. 4953 4977
49 Gregory St. Mackay
admin@stickersandsigns.com.au
www.stickersandsigns.com.au




MACKAY FUNERALS

189 Alfred Street, MACKAY
Ph. 4957 3248

24 HOUR SERVICE
Australian Owned
Established Over 100 Years



RE/MAX
TEAM REALTY
49 691 800
SALES & PROPERTY
MANAGEMENT



Taffy's Typing Service
ABN 65 767 116 741

the affordable alternative

Word processing, dictaphone transcription, desktop publishing
editing, proofreading, data entry, scanning and laminating

Ph. 0419 756 840
E-mail: taffy@matilda.net.au
www.taffystyping.com.au

It's My Party (And I'll Die If I Want To)

THE CAST

Ron Patterson
Dawn Patterson
Michael Patterson
Debbie Patterson
Karen Patterson
Ted Wilkins

Joe Clutterbuck
Maureen Coleman
Lachlan Halliwell
Sheryn Dempster
Bella Raymond
Connor Bashford

Setting: an ordinary suburban living room

Ron has 111 minutes left to live so he's invited his children over for one last family gathering. He wants to make up for any wrongs he may have done in the past but things don't go according to plan.

There will be a 20-minute interval between Act I and Act II. The bar will be open and drinks are permitted into the theatre

We respectfully request that patrons observe our Liquor Licensing requirements as displayed in the foyer

THE PRODUCTION CREW

Director
Assistant Director
Stage Manager
Sound and Lighting
Props

Media Liaison
Program
Front of House

Jim Kelly
Kath Ward
Bill Wall
Anne Clutterbuck
Carolyn Thompson
John Atkinson
Bronwyn Grannall
Taffy's Typing Service
Sue Stock
John Atkinson

THE CAST

Ron Patterson



JOE CLUTTERBUCK

Once very active in Mackay theatre as an actor, director, student of drama (ATCL 1984) and teacher of drama, Joe last appeared on the Kucom stage in *The Memory of Water* (2006). His most memorable moment on stage? Dwarfing June Bronhill (a very tiny lady) in the finale of the official opening of the Mackay Entertainment Centre dressed as Charlie's Aunt ('from

Brazil where the nuts come from') in a costume that he later used to play the Widow Twanky in a school play.

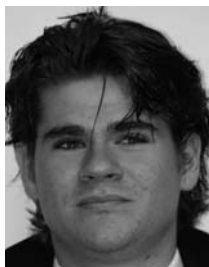
Dawn Patterson



MAUREEN COLEMAN (no relation)

Maureen is into her 21st year with Kucom, which seems quite unbelievable to her really as she looks back and wonder where she found the time for all those productions she was involved in. She was either acting, directing or working backstage and an active committee member too for most of the time. She says: I wouldn't have had it any other way. I have played funny, pitiable, evil and all sorts of characters - my favourites would have been *The Odd Couple* (female version), *Salt* and *Veronica's Room*. But I did enjoy being evil. I love to make people laugh and making them cry was quite enlightening, but evil is quite something else, very empowering as they say, so, I might have to try that again!

Michael Patterson



LACHLAN HALLIWELL

This is Lachlan's first performance with Kucom, as well as performing with a cast outside of school. He has portrayed the role of Kenickie in his high school performance of *Grease* which was very well received. He says: 'I had a lot of freakin' fun making this play. The cast and crew were amusing to work with, on and off the stage. I've gained quite a bit of insight to the world of acting which I won't ever forget.'

THE CAST

Debbie Patterson

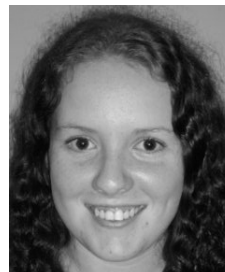


SHERYN DEMPSTER

Sheryn first trod the boards as Sheryn Kelly back in 1986 in the musical *Annie Get Your Gun* and went on to work in numerous musicals and also play in the orchestra of *Hello Dolly*. She stage-managed *Nunsense* for Wasted Space Productions, and in April this year played in *Lee* for Kucom Theatre which went

on to win Best Production at the Townsville Drama Festival in May this year. Tonight we see her as Debbie Patterson - her first big speaking role. Congratulations, Sheryn!

Karen Patterson



BELLA RAYMOND

Originally from Tieri, CQ, Bella is appearing tonight in her fourth Kucom production, her previous ones being *Blurred* and *Death in The Limelight* for Kucom Youth Theatre and *Too Close For Comfort* for Kucom earlier this year. Tonight we see her as Karen Patterson, the spoilt and selfish brat of the family. I am sure you will enjoy her performance - let's hope we see her in many more of our productions.

Ted Wilkins



CONNOR BASHFORD

Connor has been an eager participant in all things drama since his first performance in a school play in Grade 3. 'Being on stage is a bit addictive', he says. He has since been in numerous school productions including *Life's a Riot* and he played the lead in *Grease*. Connor joined Kucom in 2009 and played Lee Harvey Oswald in *Lee* earlier this year. At the 2010 Townsville Festival of One Act Plays *Lee* won Best Open Production and Best Director. Connor

feels his theatre experiences while young will stand him in good stead for a career in the performing arts. 'Plus it's just good fun'.